



**ALASKA DIVISION OF HOMELAND SECURITY &
EMERGENCY MANAGEMENT**
SITUATION REPORT 24-075 • March 15, 2024



Toll-Free 1.800.478.2337

Anchorage Area 907.428.7000

SEOC 907.428.7100

<p><u>SEOC Preparedness Level</u> Level 1 – Routine Operations.</p>	<p align="center">http://ready.alaska.gov</p>	<p><u>National Terrorism Advisory System:</u> Read the NTAS Bulletin here</p>
<p>Maritime Security (MARSEC) Level:1- Minimum Appropriate Security Measures</p>	<p>WHO Novel Coronavirus Pandemic (COVID-19): 2019 Novel Coronavirus</p>	<p><u>Alaska Military Installation Force Protection Level:</u> FPCON Bravo</p>

(Significant changes from previous situation reports are red.)

Significant Issues:

Scammon Bay Fuel Shortage

SEOC conducted an interagency meeting with members from the State, City of Scammon Bay, Native Village of Scammon Bay, Askinuk Corporation and Bureau of Indian Affairs. Today 13 55-gallon drums of heating oil will be delivered via flight charter. SEOC will continue to offer technical assistance to Tribe during fuel shortage request process.

State of Alaska Department of Health (DOH)

The DOH stands ready to assist with all aspects of public health and, in the event of a public health emergency, is supported by the SEOC and other state departments as required. For current information, see: <https://health.alaska.gov/dph/Pages/default.aspx>
<https://health.alaska.gov/dph/Emergency/Pages/prepared/default.aspx>

NTAS Bulletin

The U.S. Department of Homeland Security issued an updated National Terrorism Advisory Bulletin on May 24, 2023. The current and expired bulletins can be viewed at the below link.
<https://www.dhs.gov/national-terrorism-advisory-system>

Travel Alerts and Conditions

For current driving conditions, dial 511 or visit: <https://511.alaska.gov/>

Barry Arm Landslide / Tsunami Risk

For the latest information on the Barry Arm Landslide and Tsunami risk, click here:
<https://dggs.alaska.gov/hazards/barry-arm-landslide.html>

Earthquakes

United States Geological Service (USGS) Earthquake Information: <http://earthquake.usgs.gov/>
National Tsunami Warning Center: <http://tsunami.gov/>

Alaska Volcanoes

Great Sitkin Alert Level: **Watch** and Aviation Color Code: **Orange**
Shishaldin Alert Level: **Advisory** and Aviation Color Code: **Yellow**

For Alaska Volcano updates, go to: <https://www.avo.alaska.edu/>

Air Quality Index (AQI) Advisories

For the most up-to-date Air Quality Index Advisories:
<http://dec.alaska.gov/Applications/Air/airtoolsweb/Home/Index>

Spills of Oil and Hazardous Substances

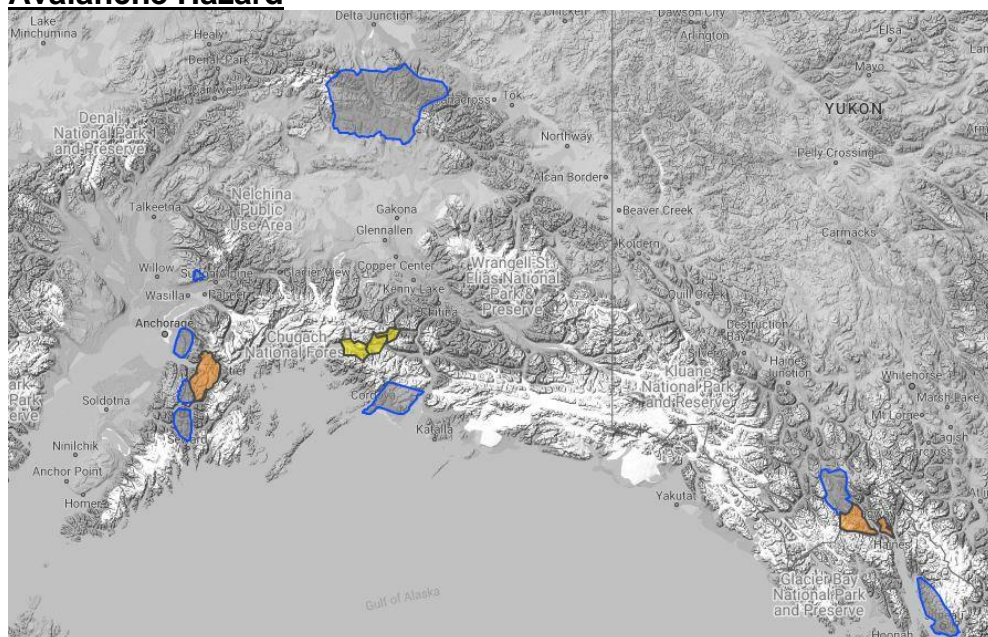
The Alaska Division of Environmental Conservation (ADEC) Spill Prevention and Response page is located at:
<https://dec.alaska.gov/spar/>

Alaska Cyber Security Information

State Employees may sign up for cybersecurity notifications and alerts at
<https://oit.alaska.gov/security>

Cybersecurity and Infrastructure Security Agency (CISA)-Cybersecurity Services and Tools:
www.cisa.gov/free-cybersecurity-services-and-tools

Avalanche Hazard



Travel in avalanche terrain is not recommended. Avoid being on or beneath all steep slopes.

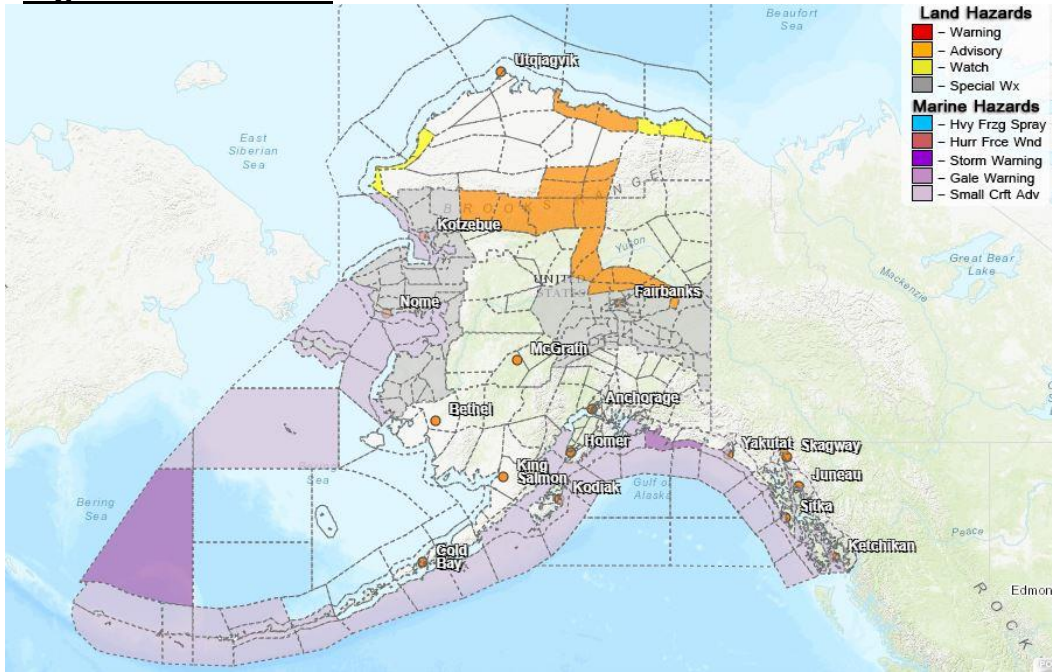
Haines- Considerable above 1500ft, Moderate 1500ft and under.

Turnagain Pass- Considerable above 1000ft, Moderate 1000ft and under.

Valdez – Moderate at all elevations.

For information and the most current avalanche conditions, go to <https://alaskasnow.org>

Significant Weather:



Special Weather Statement

- **Noatak Valley; Kivalina and Red Dog Dock; Lower Kobuk Valley; Baldwin Peninsula; Northern Seward Peninsula; Shishmaref; Bering Strait Coast; Southern Seward Peninsula Coast; Interior Seward Peninsula; Eastern Norton Sound and Nulato Hills; Yukon Delta Coast; Lower Yukon River; St Lawrence Island** - significant warmup with possible storms next week.
- **Dalton Highway Summits; White Mountains and High Terrain South of the Yukon River**- windy with blowing snow over highways this weekend.
- **Upper Tanana Valley; Eastern Alaska Range** - Mixed precipitation and warming temps this weekend.

Wind Chill Advisory

- **Central Brooks Range, South Slopes Of The Central Brooks Range**- Starting 6am Saturday to noon Sunday.

Winter Weather Advisory

- **Central Beaufort Sea Coast** – Starting 11am Sunday tell 4pm Monday.
- **Klondike Highway** – Starting 10am tell 10pm Friday.
- **Municipality of Skagway** – Starting 10am until 10pm today
- **Dalton Highway Summits; White Mountains and High Terrain South of the Yukon River** – From 11am Saturday to 7pm Sunday.

For more information and the most current weather, Watches / Warnings / Advisories go to:
<https://www.weather.gov/arh/>

The Next Situation Report will be **March 18, 2024**. A significant change in the situation or the threat level will prompt an interim report. This report is posted on the internet at <https://ready.alaska.gov/sitrep>.

To register for email distribution, go to <http://list.state.ak.us/mailman/listinfo/dhsem.situation.report>. Direct questions regarding this report to the SEOC at 907-428-7100 or seoc@alaska.gov.